

Metallized Polypropylene Film DC-Link Capacitors

FDC Series - 600 ~ 4000VDC (Cylindrical Aluminum Can Dry Type)



Overview

The FDC capacitor is constructed of metallized polypropylene film in cylindrical aluminum can with stud and filled with epoxy resin. These FDC is specially design for application in high power conversion which required high capacitance with high reliability.

Applications

Widely used in high performance DC filtering, solar inverter, wind power and energy storage. Suitable for centralized inverter systems and can replace bank of series-connected electrolytic capacitors.

Features

- Self-healing
- High capacitance density
- High ripple current and low loss
- Long lifetime
- Can replace bank of series-connected electrolytic capacitors
- THB Grade IIIB available on request.

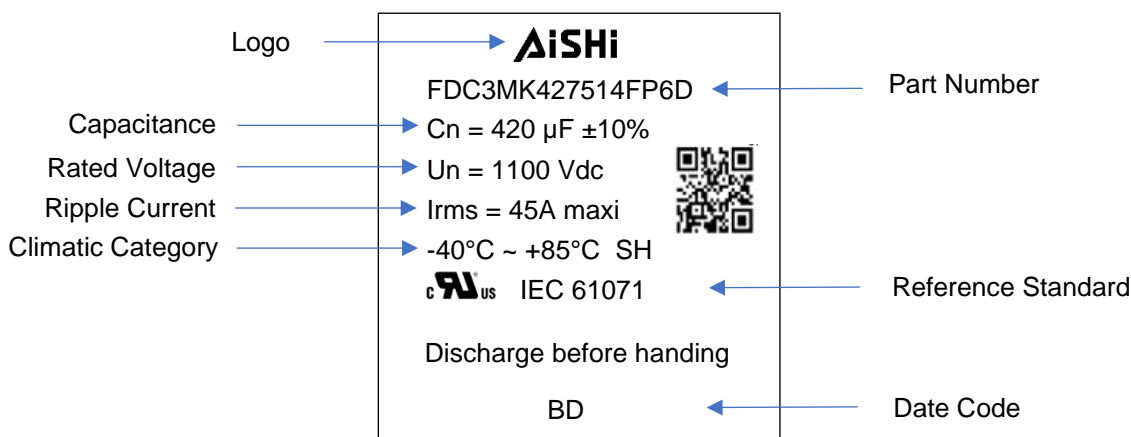


Approvals

Marking	Specification	File Number
	UL 810 (Construction Only)	E500537



Marking



Manufacturing Date Code

Year	Code	Month	Code
2018	A	Jan	1
2019	B	Feb	2
2020	C	Mar	3
2021	D	Apr	4
2022	E	May	5
2023	F	Jun	6

Year	Code	Month	Code
2024	G	Jul	7
2025	H	Aug	8
2026	J	Sep	9
2027	K	Oct	A
2028	L	Nov	N
2029	M	Dec	D

Part Number System

F	DC	3M	K	427	514	FP6	D
Capacitor Type	Series	Voltage (VDC)	Tolerance	Capacitance (pF)	Size Code	Terminal Code	Bottom Stud Code
F = Film	DC Link, Cylindrical Aluminum Can Dry Type, Metallized PP Film	600=2K 700=2M 800=2N 900=2Q 1000=3K 1100=3M 1200=3B 1300=3S 1500=3U 1750=3Q 2000=3D 2200=3C 2400=4A 2600=4B 2800=4C 3000=3F 3200=4D 3600=4E 4000=3G	J = ±5% K = ±10%	First two digits = significant figures. Third digit = Number of zeros.	Refer to Size Code Table	Refer to Terminal Code Table	Refer to Bottom Stud Code Table

Terminal Code

Digit One (Lead/Terminal Type)		Digit Two (Terminal Space)		Digit Three (Terminal Size)	
Male Terminal	M	32.0mm	P	M5	5
Female Terminal	F	35.0mm	X	M6	6
		45.0mm	Q	M8	8
		50.0mm	R		
		N/A	N		

Bottom Stud Code

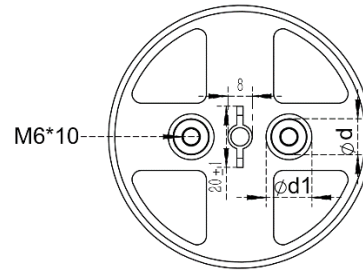
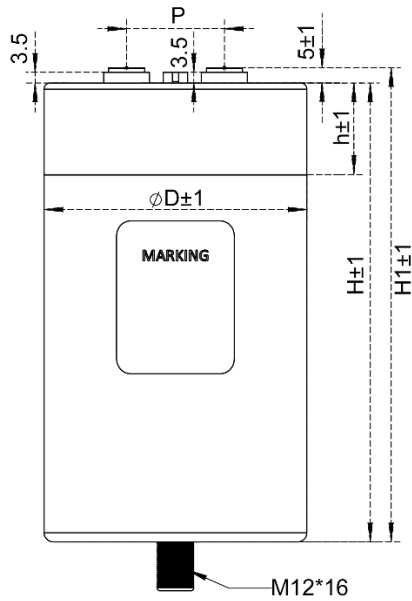
Bottom Stud	
Bottom M8*10	C
Bottom M12*16	D
No Bottom Stud	E

Metallized Polypropylene Film DC-Link Capacitors

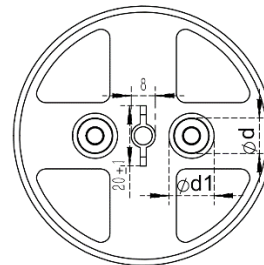
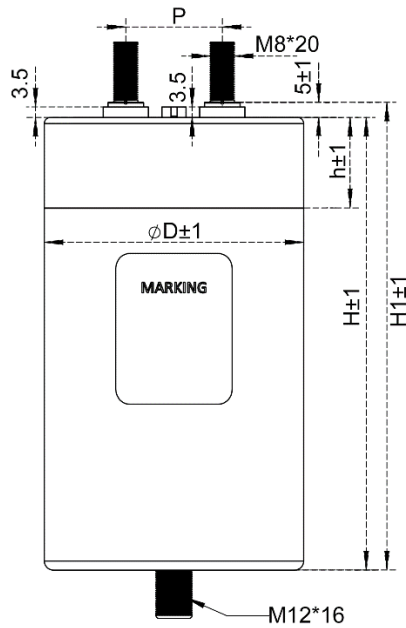
FDC Series - 600 ~ 4000VDC (Cylindrical Aluminum Can Dry Type)

Dimension (mm)

Female Terminal



Male Terminal



Size Code Table

Size Code	Dimensions (mm)					
	D ± 1	H1 ± 1	P ± 1	d ± 0.3	d1 ± 0.3	h ± 1
380	75.0	80.0	32.0	12.0	15.0	30.0
310	75.0	105.0	32.0	12.0	15.0	30.0
580	86.0	80.0	32.0	12.0	15.0	30.0
510	86.0	105.0	32.0	12.0	15.0	30.0
512	86.0	126.0	32.0	12.0	15.0	30.0
514	86.0	142.5	32.0	12.0	15.0	30.0
515	86.0	151.0	32.0	12.0	15.0	30.0
516	86.0	161.0	32.0	12.0	15.0	30.0
517	86.0	178.5	32.0	12.0	15.0	30.0
518	86.0	180.0	32.0	12.0	15.0	30.0
520	86.0	205.0	32.0	12.0	15.0	30.0
522	86.0	225.0	32.0	12.0	15.0	30.0
A15	100.0	155.0	32.0	15.0	18.0	40.0
A18	100.0	180.0	32.0	15.0	18.0	40.0
910	116.0	105.0	50.0	15.0	18.0	40.0
915	116.0	155.0	50.0	15.0	18.0	40.0
916	116.0	161.0	50.0	15.0	18.0	40.0
917	116.0	170.0	50.0	15.0	18.0	40.0
918	116.0	180.0	50.0	15.0	18.0	40.0
920	116.0	205.0	50.0	15.0	18.0	40.0
923	116.0	235.0	50.0	15.0	18.0	40.0
924	116.0	240.0	50.0	15.0	18.0	40.0
926	116.0	265.0	50.0	15.0	18.0	40.0
929	116.0	290.0	50.0	15.0	18.0	40.0
933	116.0	330.0	50.0	15.0	18.0	40.0
934	116.0	340.0	50.0	15.0	18.0	40.0
023	136.0	235.0	50.0	15.0	18.0	40.0
026	136.0	265.0	50.0	15.0	18.0	40.0
034	136.0	340.0	50.0	15.0	18.0	40.0

Metallized Polypropylene Film DC-Link Capacitors

FDC Series - 600 ~ 4000VDC (Cylindrical Aluminum Can Dry Type)



Rating and Part Number

Vdc	Cap Value μF	Dimensions			Irms 10KHz A (50°C)	Peak Current A	ESR 1KHz mΩ	ESL nH	Thermal	dv/dt V/us	Pkg Qty pcs	Part Number
		D	H1	P					Res			
		mm	mm	mm	°C/W							
600	480	75	101	32	65	1560	1.5	45	5.5	3.3	12	FDC2KK487310FP6D
600	650	75	126	32	62	1560	1.9	50	4.7	2.4	12	FDC2KK657312FP6D
600	800	75	146	32	60	1600	2.0	55	4.6	2.0	12	FDC2KK807314FP6D
600	950	75	180	32	70	3200	1.5	45	4.2	3.4	12	FDC2KK957318FP6D
600	650	86	101	32	70	2200	1.2	45	5.1	3.4	8	FDC2KK657510FP6D
600	880	86	126	32	70	2100	1.5	50	4.7	2.4	8	FDC2KK887512FP6D
600	1000	86	142	32	65	2430	1.0	55	4.6	2.4	8	FDC2KK108514FP6D
600	1100	86	146	32	66	2160	1.7	55	4.6	2.0	8	FDC2KK118514FP6D
600	1100	86	161	32	70	4200	1.4	40	4.3	3.8	8	FDC2KK118516FP6D
600	1300	86	180	32	70	4200	1.4	45	4.3	3.2	8	FDC2KK138518FP6D
600	2000	86	260	32	70	6500	1.1	55	3.0	3.3	8	FDC2KK208526FP6D
600	900	96	101	50	70	2900	1.3	45	4.7	3.2	6	FDC2KK907610FR6D
600	1200	96	126	50	70	2900	1.4	50	4.1	2.4	6	FDC2KK128612FR6D
600	1400	96	141	50	70	2890	1.5	55	3.9	2.1	6	FDC2KK148614FR6D
600	1500	96	146	50	70	2850	1.6	55	3.8	1.9	6	FDC2KK158614FR6D
600	1600	96	161	50	70	6000	1.0	40	3.5	3.8	6	FDC2KK168616FR6D
600	1800	96	180	50	70	6000	1.0	45	3.2	3.3	6	FDC2KK188618FR6D
600	1200	116	101	50	80	4000	0.7	45	5.4	3.3	5	FDC2KK128910FR6D
600	1600	116	126	50	80	4000	1.0	50	5.0	2.5	5	FDC2KK168912FR6D
600	2000	116	146	50	80	4000	1.1	55	4.9	2.0	5	FDC2KK208914FR6D
600	2100	116	161	50	100	8000	0.8	40	3.6	3.8	5	FDC2KK218916FR6D
600	2400	116	180	50	100	8000	0.9	45	3.4	3.3	5	FDC2KK248918FR6D
600	3000	116	230	50	100	11200	0.8	50	2.7	3.7	5	FDC2KK308923FR6D
600	5600	136	270	50	100	16000	0.8	60	2.0	2.9	2	FDC2KK568027FR6D
700	360	75	101	32	62	1560	1.6	45	5.6	4.3	12	FDC2MK367310FP6D
700	480	75	126	32	59	1530	2.1	50	4.7	3.2	12	FDC2MK487312FP6D
700	580	75	146	32	56	1530	2.4	55	4.6	2.6	12	FDC2MK587314FP6D
700	620	75	161	32	70	3000	1.5	40	4.3	4.8	12	FDC2MK627316FP6D
700	720	75	180	32	70	3200	1.6	45	4.2	4.4	12	FDC2MK727318FP6D
700	480	86	101	32	70	2100	1.3	45	5.1	4.4	8	FDC2MK487510FP6D
700	650	86	126	32	66	2100	1.7	50	4.7	3.2	8	FDC2MK657512FP6D
700	750	86	141	32	61	2100	2.0	55	4.7	2.8	8	FDC2MK757514FP6D
700	780	86	146	32	63	2100	1.9	55	4.6	2.7	8	FDC2MK787514FP6D
700	820	86	161	32	70	4100	1.4	40	4.4	5.0	8	FDC2MK827516FP6D
700	950	86	180	32	70	4100	1.5	45	4.3	4.3	8	FDC2MK957518FP6D
700	1500	86	260	32	70	6500	1.1	55	3.0	4.3	8	FDC2MK158526FP6D
700	650	96	101	50	69	2700	1.4	45	4.7	4.2	6	FDC2MK657610FR6D
700	900	96	126	50	69	2700	1.5	50	4.1	3.0	6	FDC2MK907612FR6D
700	1000	96	141	50	67	2700	1.7	55	3.9	2.7	6	FDC2MK108614FR6D
700	1100	96	146	50	68	2800	1.7	55	3.8	2.5	6	FDC2MK118614FR6D
700	1100	96	161	50	68	5200	1.0	40	3.5	4.7	6	FDC2MK118616FR6D
700	1300	96	180	50	70	5500	1.1	45	3.2	4.2	6	FDC2MK138618FR6D
700	920	116	101	50	80	4000	0.7	45	5.4	4.3	5	FDC2MK927910FR6D
700	1200	116	126	50	80	4000	1.0	50	5.0	3.3	5	FDC2MK128912FR6D
700	1500	116	161	50	80	4000	1.1	55	4.9	2.7	5	FDC2MK158916FR6D
700	1800	116	180	50	100	7800	1.0	40	3.4	4.3	5	FDC2MK188918FR6D
700	2300	116	230	50	100	11500	0.8	50	2.7	5.0	5	FDC2MK238923FR6D
700	4200	136	270	50	100	16000	0.8	60	2.0	3.8	2	FDC2MK428027FR6D

Metallized Polypropylene Film DC-Link Capacitors

FDC Series - 600 ~ 4000VDC (Cylindrical Aluminum Can Dry Type)



Rating and Part Number

Vdc	Cap Value μF	Dimensions			Irms 10KHz A (50°C)	Peak Current A	ESR 1KHz mΩ	ESL nH	Thermal Res °C/W	dv/dt V/us	Pkg Qty pcs	Part Number
		D	H1	P								
		mm	mm	mm								
800	290	75	101	32	60	1500	1.7	45	5.6	10.5	12	FDC2NK297310FP6D
800	400	75	126	32	58	1560	2.2	50	4.7	3.9	12	FDC2NK407312FP6D
800	480	75	146	32	55	1560	2.5	55	4.6	3.3	12	FDC2NK487314FP6D
800	480	75	161	32	70	1560	1.6	40	4.3	3.3	12	FDC2NK487316FP6D
800	560	75	180	32	70	3000	1.7	45	4.2	5.4	12	FDC2NK567318FP6D
800	520	86	126	32	64	2000	1.8	50	4.7	3.8	8	FDC2NK527512FP6D
800	580	86	142	32	61	2000	2.0	55	4.6	3.4	8	FDC2NK587514FP6D
800	630	86	146	32	60	2000	2.1	55	4.6	3.2	8	FDC2NK637514FP6D
800	650	86	161	32	70	3000	1.5	40	4.4	4.6	8	FDC2NK657516FP6D
800	750	86	180	32	70	4000	1.6	45	4.3	5.3	8	FDC2NK757518FP6D
800	1100	86	260	32	70	4000	1.2	55	3.0	3.6	8	FDC2NK118526FP6D
800	500	96	101	50	67	2620	1.4	45	4.7	5.2	6	FDC2NK507610FR6D
800	700	96	126	50	67	2700	1.6	50	4.1	3.9	6	FDC2NK707612FR6D
800	800	96	141	50	66	2700	1.8	55	3.9	3.4	6	FDC2NK807614FR6D
800	850	96	146	50	66	2700	1.8	55	3.8	3.2	6	FDC2NK857614FR6D
800	900	96	161	50	70	5400	1.1	40	3.5	6.0	6	FDC2NK907616FR6D
800	1000	96	180	50	70	5300	1.1	45	3.2	5.3	6	FDC2NK108618FR6D
800	720	116	101	50	80	3800	0.8	45	5.4	5.3	5	FDC2NK727910FR6D
800	1000	116	126	50	79	4000	1.1	60	5.0	7.0	5	FDC2NK108912FR6D
800	1200	116	146	50	77	4000	1.2	55	4.9	3.3	5	FDC2NK128914FR6D
800	1200	116	161	50	100	7500	0.9	40	3.6	6.3	5	FDC2NK128916FR6D
800	1500	116	180	50	100	8000	1.0	45	3.4	5.3	5	FDC2NK158918FR6D
800	1800	116	230	50	100	11000	0.8	50	2.7	6.1	5	FDC2NK188923FR6D
800	3200	136	270	50	100	15000	0.8	60	2.0	4.7	2	FDC2NK328027FR6D
900	290	75	101	32	55	1530	2.0	45	5.6	5.3	12	FDC2QK297310FP6D
900	400	75	126	32	53	1560	2.6	50	4.7	3.9	12	FDC2QK407312FP6D
900	480	75	146	32	51	1540	2.9	55	4.6	3.2	12	FDC2QK487314FP6D
900	480	75	161	32	69	2920	1.7	40	4.3	6.1	12	FDC2QK487316FP6D
900	560	75	180	32	68	2960	1.8	45	4.2	5.3	12	FDC2QK567318FP6D
900	380	86	101	32	65	2000	1.6	45	5.1	5.3	8	FDC2QK387510FP6D
900	520	86	126	32	59	2000	2.1	50	4.7	3.8	8	FDC2QK527512FP6D
900	580	86	142	32	58	2000	2.2	55	4.6	3.4	8	FDC2QK587514FP6D
900	630	86	146	32	55	2030	2.4	55	4.6	3.2	8	FDC2QK637514FP6D
900	650	86	161	32	70	3950	1.5	40	4.4	6.1	8	FDC2QK657516FP6D
900	750	86	180	32	70	3950	1.6	45	4.3	5.3	8	FDC2QK757518FP6D
900	1100	86	260	32	70	5800	1.3	55	3.0	5.3	8	FDC2QK118526FP6D
900	500	96	101	50	67	2620	1.4	45	4.7	5.2	6	FDC2QK507610FR6D
900	700	96	126	50	67	2700	1.6	50	4.1	3.9	6	FDC2QK707612FR6D
900	800	96	141	50	66	2700	1.8	55	3.9	3.4	6	FDC2QK807614FR6D
900	850	96	146	50	66	2700	1.8	55	3.8	3.2	6	FDC2QK857614FR6D
900	900	96	161	50	70	5400	1.1	45	3.5	6.0	6	FDC2QK907616FR6D
900	1000	96	180	50	70	5230	1.1	45	3.2	5.2	6	FDC2QK108618FR6D
900	720	116	101	50	80	3800	1.1	45	5.4	5.3	5	FDC2QK727910FR6D
900	1200	116	146	50	71	3860	1.4	55	4.9	3.2	5	FDC2QK128914FR6D
900	1200	116	161	50	100	7280	0.9	40	3.6	6.1	5	FDC2QK128916FR6D
900	1500	116	180	50	60	12000	2.0	65	4.8	8.0	5	FDC2QK158918FR6D
900	1800	116	230	50	100	14400	0.8	60	2.4	8.0	5	FDC2QK188923FR6D
900	3200	136	270	50	100	15000	0.8	60	2.0	4.7	2	FDC2QK328027FR6D

Metallized Polypropylene Film DC-Link Capacitors

FDC Series - 600 ~ 4000VDC (Cylindrical Aluminum Can Dry Type)



Rating and Part Number

Vdc	Cap Value μF	Dimensions			Irms 10KHz A (50°C)	Peak Current A	ESR 1KHz mΩ	ESL nH	Thermal Res °C/W	dv/dt V/us	Pkg Qty pcs	Part Number
		D	H1	P								
		mm	mm	mm								
1000	220	75	101	32	53	1500	2.2	45	5.6	6.8	12	FDC3KK227310FP6D
1000	300	75	126	32	50	1500	2.9	50	4.7	5.0	12	FDC3KK307312FP6D
1000	360	75	146	32	48	1500	3.3	55	4.6	4.2	12	FDC3KK367314FP6D
1000	360	75	161	32	65	2750	1.9	40	4.3	7.6	12	FDC3KK367316FP6D
1000	420	75	180	32	64	2750	2.0	45	4.2	6.5	12	FDC3KK427318FP6D
1000	290	86	101	32	61	1920	1.8	45	5.1	6.6	8	FDC3KK297510FP6D
1000	400	86	126	32	56	1950	2.3	50	4.7	4.9	8	FDC3KK407512FP6D
1000	470	86	141	32	58	2000	2.2	55	4.6	4.3	8	FDC3KK477514FP6D
1000	480	86	146	32	54	2000	2.6	55	4.6	4.2	8	FDC3KK487514FP6D
1000	500	86	161	32	70	3800	1.6	40	4.4	7.6	8	FDC3KK507516FP6D
1000	560	86	180	32	69	3800	1.7	45	4.3	6.8	8	FDC3KK567518FP6D
1000	900	86	260	32	75	5960	1.3	55	3.0	6.6	8	FDC3KK907526FP6D
1000	380	96	101	50	65	2500	1.5	45	4.7	6.6	6	FDC3KK387610FR6D
1000	500	96	126	50	64	2400	1.8	50	4.1	4.8	6	FDC3KK507612FR6D
1000	600	96	141	50	63	2500	1.9	55	3.9	4.2	6	FDC3KK607614FR6D
1000	650	96	146	50	64	2590	1.9	55	3.8	4.0	6	FDC3KK657614FR6D
1000	650	96	161	50	70	4800	1.1	40	3.5	7.4	6	FDC3KK657616FR6D
1000	780	96	180	50	70	5100	1.1	45	3.2	6.5	6	FDC3KK787618FR6D
1000	540	116	101	50	80	3600	1.0	45	5.4	6.7	5	FDC3KK547910FR6D
1000	740	116	126	50	70	3600	1.4	50	5.0	4.9	5	FDC3KK747912FR6D
1000	900	116	146	50	69	6800	1.5	55	4.9	7.6	5	FDC3KK907914FR6D
1000	1100	116	180	50	92	7280	1.2	45	3.4	6.6	5	FDC3KK118918FR6D
1000	1600	116	230	50	100	8000	1.5	75	2.1	5.0	5	FDC3KK168923FR6D
1000	2500	136	270	50	100	14500	0.9	60	2.0	5.8	2	FDC3KK258027FR6D
1100	170	75	101	32	50	1700	3.2	60	3.8	10.0	12	FDC3MK177310FP6D
1100	250	75	126	32	49	1430	3.0	50	4.7	5.7	12	FDC3MK257312FP6D
1100	300	75	146	32	46	1430	3.5	55	4.6	4.8	12	FDC3MK307314FP6D
1100	310	75	161	32	65	2780	1.9	40	4.3	9.0	12	FDC3MK317316FP6D
1100	360	75	180	32	64	2800	2.0	45	4.2	7.8	12	FDC3MK367318FP6D
1100	240	86	101	32	60	1880	1.9	45	5.1	7.8	8	FDC3MK247510FP6D
1100	330	86	126	32	55	1890	2.4	50	4.7	5.7	8	FDC3MK337512FP6D
1100	420	86	142	32	57	2100	2.3	55	4.6	5.0	8	FDC3MK427514FP6D
1100	420	86	161	32	63	3800	1.7	40	4.4	9.0	8	FDC3MK427516FP6D
1100	500	86	180	32	67	3800	1.8	45	4.3	7.6	8	FDC3MK507518FP6D
1100	750	86	260	32	70	5800	1.3	55	3.0	7.7	8	FDC3MK757526FP6D
1100	330	96	101	50	65	2600	1.5	45	4.7	7.9	8	FDC3MK337610FR6D
1100	440	96	126	50	63	2500	1.8	50	4.1	5.7	8	FDC3MK447612FR6D
1100	510	96	141	50	62	2500	2.0	55	3.9	4.9	8	FDC3MK517614FR6D
1100	540	96	146	50	62	2500	2.1	55	3.8	4.6	8	FDC3MK547614FR6D
1100	560	96	161	50	70	5000	1.1	40	3.5	8.9	8	FDC3MK567616FR6D
1100	650	96	180	50	70	5000	1.2	45	3.2	7.7	8	FDC3MK657618FR6D
1100	450	116	101	50	80	3500	1.0	45	5.4	7.8	5	FDC3MK457910FR6D
1100	620	116	126	50	70	3500	1.4	50	5.0	5.6	5	FDC3MK627912FR6D
1100	750	116	146	50	66	3500	1.6	55	4.9	4.7	5	FDC3MK757914FR6D
1100	780	116	161	50	100	7000	0.9	40	3.6	9.0	5	FDC3MK787916FR6D
1100	920	116	180	50	96	7200	1.1	45	3.4	7.8	5	FDC3MK927918FR6D
1100	1200	116	230	50	100	11000	0.9	50	2.7	9.2	5	FDC3MK128923FR6D
1100	2200	136	270	50	100	15000	0.9	60	2.0	6.8	2	FDC3MK228027FR6D

Metallized Polypropylene Film DC-Link Capacitors

FDC Series - 600 ~ 4000VDC (Cylindrical Aluminum Can Dry Type)



Rating and Part Number

Vdc	Cap Value μF	Dimensions			Irms 10KHz A (50°C)	Peak Current A	ESR 1KHz mΩ	ESL nH	Thermal Res °C/W	dv/dt V/us	Pkg Qty pcs	Part Number
		D	H1	P								
		mm	mm	mm								
1200	140	75	101	32	48	1350	2.7	45	5.6	6.8	12	FDC3BK147310FP6D
1200	200	75	126	32	47	1400	3.4	50	4.7	7.0	12	FDC3BK207312FP6D
1200	240	75	146	32	44	1400	3.9	55	4.6	5.8	12	FDC3BK247314FP6D
1200	240	75	161	32	63	2600	2.0	40	4.3	10.8	12	FDC3BK247316FP6D
1200	280	75	180	32	62	2700	2.1	45	4.2	9.6	12	FDC3BK287318FP6D
1200	190	86	101	32	57	1800	2.1	45	5.1	9.5	8	FDC3BK197510FP6D
1200	260	86	126	32	52	1800	2.7	50	4.7	6.9	8	FDC3BK267512FP6D
1200	320	86	142	32	55	1900	2.5	55	4.6	5.9	8	FDC3BK327514FP6D
1200	330	86	146	32	50	1900	3.0	55	4.6	5.8	8	FDC3BK337514FP6D
1200	330	86	161	32	66	3600	1.8	40	4.4	10.9	8	FDC3BK337516FP6D
1200	380	86	180	32	65	3600	1.9	45	4.3	9.5	8	FDC3BK387518FP6D
1200	580	86	260	32	75	5500	1.5	55	3.0	9.5	8	FDC3BK587526FP6D
1200	250	96	101	50	61	2300	1.7	45	4.7	9.2	6	FDC3BK257610FR6D
1200	350	96	126	50	61	2400	2.0	50	4.1	6.9	6	FDC3BK357612FR6D
1200	400	96	141	50	59	2400	2.2	55	3.9	6.0	6	FDC3BK407614FR6D
1200	420	96	146	50	59	2400	2.2	55	3.8	5.7	6	FDC3BK427614FR6D
1200	450	96	161	50	70	4800	1.2	40	3.5	10.7	6	FDC3BK457616FR6D
1200	500	96	180	50	70	4600	1.2	45	3.2	9.2	6	FDC3BK507618FR6D
1200	360	116	101	50	76	3400	1.1	45	5.4	9.4	5	FDC3BK367910FR6D
1200	500	116	126	50	66	3500	1.6	50	5.0	7.0	5	FDC3BK507912FR6D
1200	600	116	146	50	62	3500	1.8	55	4.9	5.8	5	FDC3BK607914FR6D
1200	620	116	161	50	98	6800	1.0	40	3.6	11.0	5	FDC3BK627916FR6D
1200	720	116	180	50	92	6800	1.2	45	3.4	9.4	5	FDC3BK727918FR6D
1200	950	116	230	50	100	10000	0.9	50	2.7	10.5	5	FDC3BK957923FR6D
1200	1700	136	270	50	100	13900	0.9	60	2.0	8.2	2	FDC3BK178027FR6D
1300	120	75	101	32	46	1300	2.9	45	5.6	10.8	12	FDC3SK127310FP6D
1300	170	75	126	32	44	1350	3.7	50	4.7	7.9	12	FDC3SK177312FP6D
1300	210	75	146	32	43	1400	4.1	55	4.6	6.7	12	FDC3SK217314FP6D
1300	210	75	161	32	62	2650	2.1	40	4.3	12.6	12	FDC3SK217316FP6D
1300	240	75	180	32	60	2600	2.3	45	4.2	10.8	12	FDC3SK247318FP6D
1300	170	86	101	32	55	1850	2.2	45	5.1	10.9	8	FDC3SK177510FP6D
1300	230	86	126	32	51	1850	2.8	50	4.7	8.0	8	FDC3SK237512FP6D
1300	270	86	142	32	52	1800	2.8	55	4.6	6.7	8	FDC3SK277514FP6D
1300	270	86	146	32	48	1800	3.3	55	4.6	6.7	8	FDC3SK277514FP6D
1300	280	86	161	32	66	3500	1.8	40	4.4	12.5	8	FDC3SK287516FP6D
1300	320	86	180	32	65	3500	1.9	45	4.3	10.9	8	FDC3SK327518FP6D
1300	520	86	260	32	70	5600	1.5	55	3.0	10.8	8	FDC3SK527526FP6D
1300	210	96	101	50	60	2300	1.8	45	4.7	11.0	6	FDC3SK217610FR6D
1300	280	96	126	50	58	2300	2.1	50	4.1	8.2	6	FDC3SK287612FR6D
1300	330	96	141	50	57	2300	2.3	55	3.9	7.0	6	FDC3SK337614FR6D
1300	360	96	146	50	58	2400	2.3	55	3.8	6.7	6	FDC3SK367614FR6D
1300	380	96	161	50	70	4700	1.2	40	3.5	12.4	6	FDC3SK387616FR6D
1300	420	96	180	50	70	4500	1.3	45	3.2	10.7	6	FDC3SK427618FR6D
1300	320	116	101	50	73	3500	1.2	45	5.4	10.9	5	FDC3SK327910FR6D
1300	430	116	126	50	66	3400	1.6	50	5.0	7.9	5	FDC3SK437912FR6D
1300	520	116	146	50	62	3400	1.8	55	4.9	6.5	5	FDC3SK527914FR6D
1300	540	116	161	50	98	6800	1.0	40	3.6	12.6	5	FDC3SK547916FR6D
1300	630	116	180	50	92	6800	1.2	45	3.4	10.8	5	FDC3SK637918FR6D

Metallized Polypropylene Film DC-Link Capacitors

FDC Series - 600 ~ 4000VDC (Cylindrical Aluminum Can Dry Type)



Rating and Part Number

Vdc	Cap Value μF	Dimensions			Irms 10KHz A (50°C)	Peak Current A	ESR 1KHz mΩ	ESL nH	Thermal Res °C/W	dv/dt V/us	Pkg Qty pcs	Part Number
		D mm	H1 mm	P mm								
1300	820	116	230	50	100	10000	0.9	50	2.7	12.2	5	FDC3SK827923FR6D
1300	1500	136	270	50	100	14000	1.0	60	2.0	9.3	2	FDC3SK158027FR6D
1400	100	75	101	32	44	1250	3.1	45	5.6	12.5	12	FDC3TK107310FP6D
1400	140	75	126	32	43	1300	4.0	50	4.7	9.3	12	FDC3TK147312FP6D
1400	170	75	146	32	40	1300	4.6	55	4.6	7.6	12	FDC3TK177314FP6D
1400	170	75	161	32	59	2500	2.3	40	4.3	14.7	12	FDC3TK177316FP6D
1400	200	75	180	32	58	2500	2.4	45	4.2	12.5	12	FDC3TK207318FP6D
1400	140	86	101	32	53	1800	2.4	45	5.1	12.9	8	FDC3TK147510FP6D
1400	190	86	126	32	49	1800	3.1	50	4.7	9.5	8	FDC3TK197512FP6D
1400	230	86	142	32	51	1800	2.9	55	4.6	7.8	8	FDC3TK237514FP6D
1400	240	86	161	32	64	3500	1.9	40	4.4	14.6	8	FDC3TK247516FP6D
1400	270	86	180	32	62	3400	2.1	45	4.3	12.6	8	FDC3TK277518FP6D
1400	420	86	260	32	70	5200	1.5	55	3.0	12.4	8	FDC3TK427526FP6D
1400	180	96	101	50	59	2250	1.8	45	4.7	12.5	6	FDC3TK187610FR6D
1400	250	96	126	50	58	2300	2.2	50	4.1	9.2	6	FDC3TK257612FR6D
1400	290	96	141	50	57	2300	2.4	55	3.9	7.9	6	FDC3TK297614FR6D
1400	320	96	161	50	70	4600	1.2	40	3.5	14.4	6	FDC3TK327616FR6D
1400	360	96	180	50	70	4500	1.3	45	3.2	12.5	6	FDC3TK367618FR6D
1400	260	116	101	50	70	3200	1.3	45	5.4	12.3	5	FDC3TK267910FR6D
1400	360	116	126	50	62	3200	1.8	50	5.0	8.9	5	FDC3TK367912FR6D
1400	450	116	146	50	59	3400	2.0	55	4.9	7.6	5	FDC3TK457914FR6D
1400	460	116	161	50	94	6500	1.1	40	3.6	14.1	5	FDC3TK467916FR6D
1400	540	116	180	50	79	6700	1.3	45	3.4	12.4	5	FDC3TK547918FR6D
1400	700	116	230	50	94	9900	0.9	50	2.7	14.1	5	FDC3TK707923FR6D
1400	1300	116	270	50	100	14000	1.0	60	2.0	10.8	5	FDC3TK138927FR6D
1500	90	75	101	32	43	1200	3.3	45	5.6	13.3	12	FDC3UK906310FP6D
1500	120	75	126	32	41	1200	4.4	50	4.7	10.0	12	FDC3UK127312FP6D
1500	150	75	146	32	39	1200	4.9	55	4.6	8.0	12	FDC3UK157314FP6D
1500	150	75	161	32	58	2300	2.4	40	4.3	15.3	12	FDC3UK157316FP6D
1500	170	75	180	32	57	2300	2.5	45	4.2	13.5	12	FDC3UK177318FP6D
1500	120	86	101	32	51	1600	2.6	45	5.1	13.3	8	FDC3UK127510FP6D
1500	170	86	126	32	47	1600	3.3	50	4.7	9.4	8	FDC3UK177512FP6D
1500	200	86	142	32	50	1700	3.0	55	4.6	8.5	8	FDC3UK207514FP6D
1500	210	86	161	32	63	3300	2.0	40	4.4	15.7	8	FDC3UK217516FP6D
1500	240	86	180	32	62	3300	2.1	45	4.3	13.8	8	FDC3UK247518FP6D
1500	380	86	260	32	70	5000	1.5	55	3.0	13.2	8	FDC3UK387526FP6D
1500	160	96	101	50	58	2150	1.9	45	4.7	13.4	6	FDC3UK167610FR6D
1500	210	96	126	50	56	2100	2.3	50	4.1	10.0	6	FDC3UK217612FR6D
1500	250	96	141	50	55	2100	2.5	55	3.9	8.4	6	FDC3UK257614FR6D
1500	270	96	161	50	70	4300	1.3	40	3.5	15.9	6	FDC3UK277616FR6D
1500	320	96	180	50	70	4300	1.3	45	3.2	13.4	6	FDC3UK327618FR6D
1500	230	116	101	50	68	3100	1.4	45	5.4	13.5	5	FDC3UK237910FR6D
1500	320	116	126	50	60	3100	1.9	50	5.0	9.7	5	FDC3UK327912FR6D
1500	390	116	146	50	58	3200	2.1	55	4.9	8.2	5	FDC3UK397914FR6D
1500	420	116	161	50	94	6500	1.1	40	3.6	15.5	5	FDC3UK427916FR6D
1500	470	116	180	50	79	6300	1.3	45	3.4	13.4	5	FDC3UK477918FR6D
1500	600	116	230	50	89	9200	1.0	50	2.7	15.3	5	FDC3UK607923FR6D
1500	1100	136	270	50	100	12800	1.1	60	2.0	11.6	2	FDC3UK118027FR6D

Metallized Polypropylene Film DC-Link Capacitors

FDC Series - 600 ~ 4000VDC (Cylindrical Aluminum Can Dry Type)



Rating and Part Number

Vdc	Cap Value μF	Dimensions			Irms 10KHz A (50°C)	Peak Current A	ESR 1KHz mΩ	ESL nH	Thermal Res °C/W	dv/dt V/us	Pkg Qty pcs	Part Number
		D	H1	P								
		mm	mm	mm								
2000	110	86	146	32	42	1800	3.5	60	4.5	16.4	8	FDC3DK117514FP6D
2000	200	86	230	32	69	3600	1.8	60	3.2	18.0	8	FDC3DK207523FP6D
2000	200	116	126	50	61	3600	2.1	60	3.5	18.0	5	FDC3DK207912FR6D
2000	220	116	146	50	60	3600	2.3	65	3.3	16.4	5	FDC3DK227914FR6D
2000	280	116	180	50	93	7400	1.1	55	2.9	26.4	5	FDC3DK287918FR6D
2000	400	116	230	50	93	7400	1.3	60	2.4	18.5	5	FDC3DK407923FR6D
2000	250	136	126	50	67	5000	1.8	60	2.9	20.0	2	FDC3DK257012FR6D
2000	320	136	146	50	66	5000	2.0	65	2.7	15.6	2	FDC3DK327014FR6D
2000	360	136	180	50	99	10000	1.0	55	2.4	27.8	2	FDC3DK367018FR6D
2000	500	136	230	50	98	10000	1.2	60	2.1	20.0	2	FDC3DK507023FR6D
2000	620	136	270	50	98	10000	1.3	60	1.9	16.1	2	FDC3DK627027FR6D
2200	100	86	146	32	41	1800	3.7	65	4.5	18.0	8	FDC3CK107514FP6D
2200	150	86	230	32	68	3600	1.9	60	3.2	24.0	8	FDC3CK157523FP6D
2200	150	116	126	50	59	3400	2.2	60	3.5	22.7	5	FDC3CK157912FR6D
2200	180	116	146	50	58	3400	2.5	65	3.3	18.9	5	FDC3CK187914FR6D
2200	220	116	180	50	91	7200	1.1	55	2.9	32.7	5	FDC3CK227918FR6D
2200	300	116	230	50	91	7100	1.4	60	2.4	23.7	5	FDC3CK307923FR6D
2200	220	136	126	50	66	4800	1.9	60	2.9	21.8	2	FDC3CK227012FR6D
2200	250	136	146	50	65	5000	2.1	65	2.7	20.0	2	FDC3CK257014FR6D
2200	300	136	180	50	97	9800	1.0	55	2.4	32.7	2	FDC3CK307018FR6D
2200	420	136	230	50	96	9800	1.2	60	2.1	23.3	2	FDC3CK427023FR6D
2200	500	136	270	50	97	10000	1.4	60	1.9	20.0	2	FDC3CK507027FR6D
2400	75	86	146	32	40	1800	3.9	65	4.5	24.0	8	FDC4AK756514FP6D
2400	120	86	230	32	65	3500	2.0	60	3.2	29.2	8	FDC4AK127523FP6D
2400	120	116	126	50	58	3500	2.3	60	3.5	29.2	5	FDC4AK127912FR6D
2400	140	116	146	50	56	3300	2.6	65	3.3	23.6	5	FDC4AK147914FR6D
2400	170	116	180	50	89	6800	1.2	55	2.9	40.0	5	FDC4AK177918FR6D
2400	240	116	230	50	89	6900	1.4	60	2.4	28.8	5	FDC4AK247923FR6D
2400	160	136	126	50	63	4600	2.0	60	2.9	28.8	2	FDC4AK167012FR6D
2400	200	136	146	50	63	4700	2.2	65	2.7	23.5	2	FDC4AK207014FR6D
2400	240	136	180	50	95	9600	1.1	55	2.4	40.0	2	FDC4AK247018FR6D
2400	330	136	230	50	94	9600	1.3	60	2.1	29.1	2	FDC4AK337023FR6D
2400	410	136	270	50	95	9600	1.4	60	1.9	23.4	2	FDC4AK417027FR6D
2600	63	86	146	32	38	1700	4.1	65	4.5	27.0	8	FDC4BK636514FP6D
2600	100	86	230	32	63	3400	2.1	60	3.2	34.0	8	FDC4BK107523FP6D
2600	100	116	126	50	57	3400	2.4	60	3.6	34.0	5	FDC4BK107912FR6D
2600	120	116	146	50	55	3300	2.7	65	3.3	27.5	5	FDC4BK127914FR6D
2600	140	116	180	50	87	6600	1.2	55	2.9	47.1	5	FDC4BK147918FR6D
2600	200	116	230	50	87	6700	1.5	60	2.5	33.5	5	FDC4BK207923FR6D
2600	140	136	126	50	63	4700	2.0	60	3.0	33.6	2	FDC4BK147012FR6D
2600	170	136	146	50	62	4700	2.3	65	2.8	27.6	2	FDC4BK177014FR6D
2600	200	136	180	50	94	9400	1.1	55	2.5	47.0	2	FDC4BK207018FR6D
2600	280	136	230	50	93	9600	1.3	60	2.1	34.3	2	FDC4BK287023FR6D
2600	340	136	270	50	92	9400	1.5	60	1.9	27.6	2	FDC4BK347027FR6D
2800	54	86	146	32	37	1700	4.3	65	4.5	31.5	8	FDC4CK546514FP6D
2800	88	86	230	32	62	3400	2.2	60	3.2	38.6	8	FDC4CK886523FP6D
2800	88	116	126	50	56	3300	2.5	60	3.6	37.5	5	FDC4CK886912FR6D
2800	100	116	146	50	53	3200	2.9	65	3.4	32.0	5	FDC4CK107914FR6D

Metallized Polypropylene Film DC-Link Capacitors

FDC Series - 600 ~ 4000VDC (Cylindrical Aluminum Can Dry Type)



Rating and Part Number

Vdc	Cap Value μF	Dimensions			Irms 10KHz A (50°C)	Peak Current A	ESR 1KHz mΩ	ESL nH	Thermal Res °C/W	dv/dt V/us	Pkg Qty pcs	Part Number
		D	H1	P								
		mm	mm	mm								
2800	120	116	180	50	85	6500	1.3	55	2.9	54.2	5	FDC4CK127918FR6D
2800	180	116	230	50	85	6600	1.5	60	2.5	36.7	5	FDC4CK187923FR6D
2800	120	136	126	50	62	4700	2.1	60	3.0	39.2	2	FDC4CK127012FR6D
2800	140	136	146	50	59	4400	2.4	65	2.8	31.4	2	FDC4CK147014FR6D
2800	170	136	180	50	92	9200	1.1	55	2.5	54.1	2	FDC4CK177018FR6D
2800	240	136	230	50	92	9300	1.3	60	2.1	38.8	2	FDC4CK247023FR6D
2800	290	136	270	50	91	9200	1.5	60	1.9	31.7	2	FDC4CK297027FR6D
3000	46	86	146	32	36	1600	4.6	65	4.6	34.8	8	FDC3FK466514FP6D
3000	75	86	230	32	61	3100	2.3	60	3.2	41.3	8	FDC3FK756523FP6D
3000	75	116	126	50	54	3100	2.6	60	3.6	41.3	5	FDC3FK756912FR6D
3000	90	116	146	50	53	3100	2.9	65	3.3	34.4	5	FDC3FK906914FR6D
3000	100	116	180	50	83	5800	1.3	55	3.0	58.0	5	FDC3FK107918FR6D
3000	140	116	230	50	82	5800	1.6	60	2.5	41.4	5	FDC3FK147923FR6D
3000	100	136	126	50	60	4200	2.2	60	3.0	42.0	2	FDC3FK107012FR6D
3000	120	136	146	50	58	4100	2.5	65	2.8	34.2	2	FDC3FK127014FR6D
3000	140	136	180	50	89	8200	1.2	55	2.5	58.6	2	FDC3FK147018FR6D
3000	200	136	230	50	89	8400	1.4	60	2.2	42.0	2	FDC3FK207023FR6D
3000	250	136	270	50	89	8600	1.6	60	1.9	34.4	2	FDC3FK257027FR6D
3200	40	86	146	32	35	1500	4.9	65	4.6	37.5	8	FDC4DK406514FP6D
3200	65	86	230	32	59	2900	2.4	60	3.2	44.6	8	FDC4DK656523FP6D
3200	65	116	126	50	53	2900	2.7	60	3.6	44.6	5	FDC4DK656912FR6D
3200	80	116	146	50	52	2900	3.1	65	3.4	36.3	5	FDC4DK806914FR6D
3200	92	116	180	50	83	5700	1.3	55	3.0	62.0	5	FDC4DK926918FR6D
3200	120	116	230	50	80	5400	1.7	60	2.5	45.0	5	FDC4DK127923FR6D
3200	90	136	126	50	59	4000	2.2	60	3.0	44.4	2	FDC4DK906012FR6D
3200	110	136	146	50	58	4000	2.5	65	2.8	36.4	2	FDC4DK117014FR6D
3200	120	136	180	50	87	7500	1.2	55	2.6	62.5	2	FDC4DK127018FR6D
3200	180	136	230	50	89	8100	1.4	60	2.2	45.0	2	FDC4DK187023FR6D
3200	220	136	270	50	88	8100	1.6	60	1.9	36.8	2	FDC4DK227027FR6D
3600	32	86	146	32	38	1600	4.0	65	4.6	50.0	8	FDC4EK326514FP6D
3600	45	86	230	32	64	3300	2.0	60	3.3	73.3	8	FDC4EK456523FP6D
3600	44	116	126	50	57	3200	2.3	60	3.7	72.7	5	FDC4EK446912FR6D
3600	54	116	146	50	55	3200	2.7	65	3.4	59.3	5	FDC4EK546914FR6D
3600	88	116	230	50	87	6400	1.4	60	2.5	72.7	5	FDC4EK886923FR6D
3600	110	116	270	50	85	6500	1.6	60	2.3	59.1	5	FDC4EK117927FR6D
3600	61	136	126	50	63	4500	2.0	60	3.0	73.8	2	FDC4EK616012FR6D
3600	75	136	146	50	61	4400	2.3	65	2.8	58.7	2	FDC4EK756014FR6D
3600	120	136	230	50	92	8800	1.3	60	2.2	73.3	2	FDC4EK127023FR6D
3600	150	136	270	50	92	8800	1.5	60	2.0	58.7	2	FDC4EK157027FR6D
4000	24	86	146	32	37	1650	4.2	65	4.6	68.8	8	FDC3GK246514FP6D
4000	38	86	230	32	62	3200	2.1	60	3.3	84.2	8	FDC3GK386523FP6D
4000	37	116	126	50	55	3100	2.4	60	3.7	83.8	5	FDC3GK376912FR6D
4000	46	116	146	50	54	3100	2.8	65	3.4	67.4	5	FDC3GK466914FR6D
4000	74	116	230	50	85	6300	1.5	60	2.5	85.1	5	FDC3GK746923FR6D
4000	92	116	270	50	83	6300	1.7	60	2.3	68.5	5	FDC3GK926927FR6D
4000	52	136	126	50	62	4400	2.1	60	3.0	84.6	2	FDC3GK526012FR6D
4000	64	136	146	50	60	4400	2.3	65	2.8	68.8	2	FDC3GK646014FR6D
4000	100	136	230	50	90	8500	1.3	60	2.2	85.0	2	FDC3GK107023FR6D

Metallized Polypropylene Film DC-Link Capacitors

FDC Series - 600 ~ 4000VDC (Cylindrical Aluminum Can Dry Type)



Rating and Part Number

Vdc	Cap Value μF	Dimensions			I _{rms} 10KHz A (50°C)	Peak Current A	ESR 1KHz mΩ	ESL nH	Thermal Res °C/W	dv/dt V/us	Pkg Qty pcs	Part Number
		D mm	H1 mm	P mm								
4000	130	136	270	50	91	8900	1.5	60	2.0	68.5	2	FDC3GK137027FR6D

Note:

Part Number 13th digit (Terminal code) : F means Female terminals (M6), M means Male terminals (M8)



General Technical Data

Applications	DC Link / DC Filtering
Dielectric	Metallized Polypropylene Film
Reference Standard	IEC 61071
Climatic Category	40/85/56 IEC 60068-1
Operating Temperature Range	-40°C ~ +85°C
Storage Temperature	-40°C ~ +85°C
Storage Conditions	Storage time: ≤24 months from the date marked on the label package. Temperature and relative humidity should be -10°C ~ +40°C and not more than 75%RH. RH ≤85% for 30 days randomly distributed throughout the year.
Storage Life	Product that passed less than 2 years from production, No need reconfirmation
RoHS Compliance	Compliant with the restricted substance requirement of Directive 2011/65/EU
Maximum Torque (Nm)	M6 = 4.5 M8 = 8.5 M12 = 15

Electric Clearance and Creepage

Cylindrical Can Diameter (ØD)	Distance terminal to terminal		Distance terminal to case	
	Creepage	Clearance	Creepage	Clearance
75	35	20	48	46
86	35	20	52	50
100	50	35	59	57
116	50	35	67	65
136	50	35	77	75

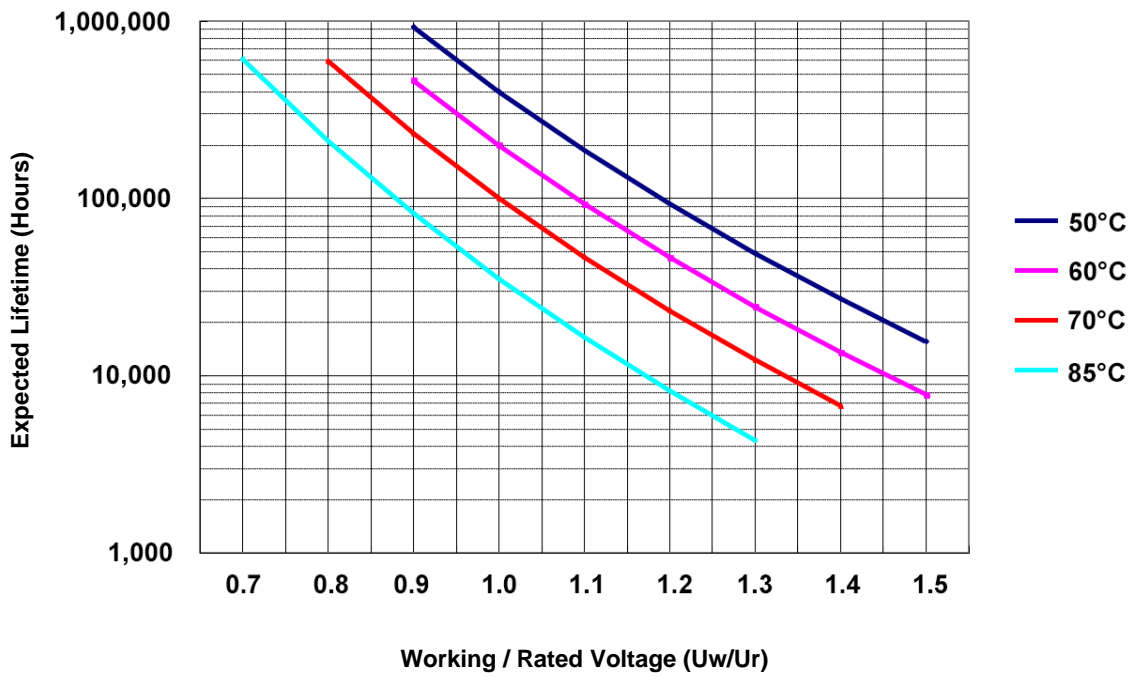
Constructions

Metallized Film	OPP & Al/Zn	
Metal Sprayed	Zn	
Connection Stripe	Tinned copper	
Aluminum Case	Al can with stud	
Top Cover	PBT, flame retardant UL 94 V0	
Filling	Epoxy resin, flame retardant UL 94 V0	
Terminal	Tinned brass	
Film Construction	Mono Structure 	Internal Series Connection 

Electrical Characteristics

Voltage Range	600Vdc ~ 4000Vdc
Capacitance Range	24 μ F ~ 5600 μ F
Capacitance Tolerance	\pm 5% or \pm 10% at +25°C
Capacitance	Measuring Frequency at 1kHz Measuring Voltage: 1 ± 0.2 V
Standard Atmospheric Conditions for Static Test	<p>Ambient temperature 15°C to 35°C (If there is any doubt on the results, the measurements shall be made at +20 +/- 5°C)</p> <p>Relative humidity 45% to 75% (If there is any doubt on the results, the measurements shall be made at 60% to 70 %.)</p> <p>Air pressure 86 kPa to 106 kPa.</p>
Visual examination, Marking (Non-Destructive)	Appearance: no remarkable abnormality
Voltage Between Terminals U_{TT}	1.5 x V_R VDC for 10 seconds
Voltage Between Terminals and Case U_{TC}	4000V _{AC} 50/60Hz 10 seconds
Dissipation factor	\leq 0.0020 at 100Hz
Insulation Resistance	$IR \times C \geq 10,000$ s at 100VDC 1minute at +25°C
Hot-Spot	$\leq 85^\circ$ C
Life Expectancy	$\geq 100,000$ hours at rated voltage and 70°C
Failure Rate	≤ 100 FIT
Max. Altitude	4000m, when above 2000m current derating as per 1.35%/100m
<p>Overvoltage</p> <p>Apply 110% of rated voltage Apply 115% of rated voltage Apply 120% of rated voltage Apply 130% of rated voltage Apply 150% of rated voltage</p>	<p>Maximum duration within one day</p> <p>30% of on-load duration 30 mins 5 mins 1 min 30ms every time, 1000 times during lifetime</p>

Expected Life Curve



Packaging Information

Capacitors are well protected by foams. And then are packaged in the cartons.

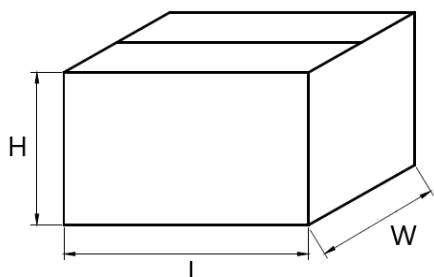


Table 1 carton dimensions

Carton No.	L (mm)	W (mm)	H (mm)
1	375	285	235
2	375	285	300
3	375	285	330
4	375	285	365
5	375	285	265

According to the capacitor's diameter, every carton contains capacitors as per the following Table 2.

Table 2 Capacitor quantity of each carton

Capacitor Diameter (mm)	Quantity (pcs)
75	12
86	8
96	6
106	5
116	5
136	2

Cautions and Warnings

- Don't exceed the upper category temperature.
- For longtime storage, maximum relative humidity 80%, no dew allowed on the capacitor.
- Do not use or store capacitor in corrosive atmosphere, in the dusty environment's regular maintenance and cleaning especially of the terminals is required to avoid conductive path between terminal / or terminal and ground.
- Don't apply any mechanical stress to the capacitor terminals, and avoid any compressive, tensile or flexural stress.
- Avoid overload of the capacitors
- Do not have unlimited service life expectancy, the max service life expectancy may vary depending on the application the capacitor is used in.

Disclaimer

All product, product specifications and data in this datasheet are subject to change without notice to improve reliability, function or design or otherwise. The customer is responsible for checking and verifying the extent to which the Information contained in this publication is applicable to an order at the time the order is placed. All Information given herein is believed to be accurate and reliable, but it is presented without guarantee, warranty, or responsibility of any kind, expressed or implied.

In individual cases, a malfunction of electronic components or failure before the end of their usual service life cannot be completely ruled out in the current state of the art, even if they are operated as specified. In customer application requiring a very high level of operational safety and especially in customer applications in which the malfunction or failure of an electronic component could endanger human life or health (e.g. in accident prevention or lifesaving systems), it must therefore be ensured by means of suitable design of the customer application or other action taken by the customer (e.g. installation of protective circuitry or redundancy) that no injury or damage is sustained by third parties in the event of malfunction or failure of an electronic component.

We continue efforts to improve our products. Therefore, the products described in this publication may change from time to time. The same is true of the corresponding product specifications. Please check therefore to what extent product descriptions and specifications contained in this publication are still applicable before or when you place an order. We also reserve the right to discontinue production and delivery of products. Consequently, we cannot guarantee that all products named in this publication will always be available.

No license, express or implied, by estoppel or otherwise, to any intellectual property rights is granted by this document or by any conduct of Aishi. Product names and markings noted herein may be trademarks of their respective owners.